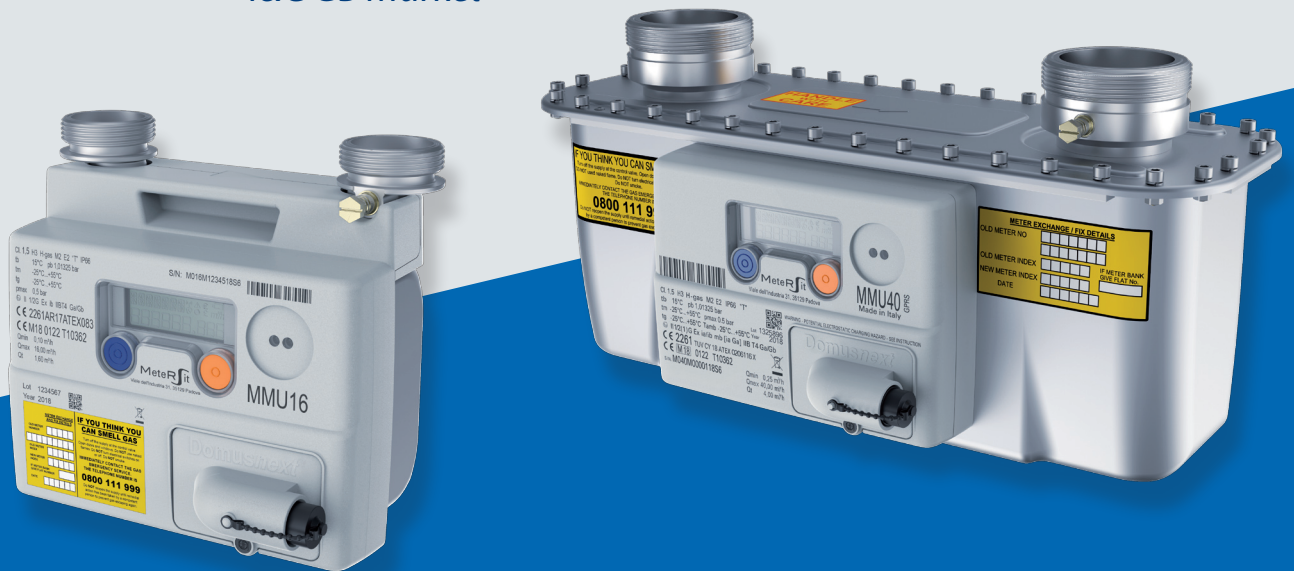


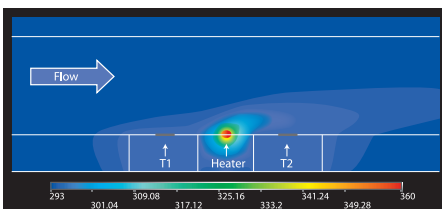
Domusnext[®] 2.0 MMU16 - MMU25 - MMU40

The MeterSit MMU16, MMU25, MMU40

Static Thermal Mass Gas Meter for
I&C GB market



The measurement principle



Measurement is intrinsically compensated in temperature and independent from pressure.
Measurement is displayed directly in standard cubic-meters.

SMART METERING FUNCTIONS

- Half hourly and daily consumption profiles
- Event logging and alarm signaling
- Time synchronization
- Programmable billing snapshots and communication time
- Remote firmware upgrade
- Data security and data protection
- Simple commissioning using only push buttons, for meters ready-configured
- Pulse output for external devices consumption logging
- Triage facilities and communication diagnostics available on display
- Double battery: external battery replaceable in the field without data loss
- Integrated high performance antenna and option for external antenna
- Air detection option: tamper protection against deinstallation fraud



www.metersit.com

Main Office

Via Felice Casati 44
20124 Milano, Italia
Tel. +39 02 67841211
email: info@metersit.com

Registered Office

Viale dell'Industria 31-33
35129 Padova, Italia
Tel. +39 049 8293111

Production Plants

Via Achille Grandi 6
45100 Rovigo, Italia
Sos. Cristianului 34
500053 Brasov, Romania

Domusnext[®] 2.0 MMU16 - MMU25 - MMU40

Technical data

Type Approval

Measuring range

Standard temperature for volume

Standard pressure for volume

Operating temperature

Applicable gases

Max. operating pressure

Accuracy class

Measuring Accuracy Q_{min} Q_t

Measuring Accuracy Q_t Q_{max}

Max. Pressure drop

External pulse output (optional)

Depth of daily consumption registers

Depth of half-hourly consumption registers

Resistance to water, dust and impact

ATEX

Display

Battery supply

Optical port

Communication Protocol

MMU16 - MMU25 - MMU40

MID T10362 Module B
and CE-193 Module D

MMU16 = 0.10 – 16.0 m³/h

MMU25 = 0.16 – 25.0 m³/h

MMU40 = 0.25 – 40.0 m³/h

15 °C

1013.25 mbar

-25 °C to 55 °C

2nd Family Group H and L (EN 437)

500 mbar

1.5

± 3.0 %

± 1.5 %

MMU16, MMU25 <2 mbar at Q_{max}

MMU40 <3 mbar at Q_{max}

Binder connection DIN 6 PINS

6 months

100 days

IP66, IK08

Ex II 1/2(1) G Ex ia/ib mb [ia Ga] IIB T4 Ga/Gb

Multi-segment display, Upper line 7 characters

Lower line 9 digits

Automotive range -30°C to +85°C

3.6 V TLC

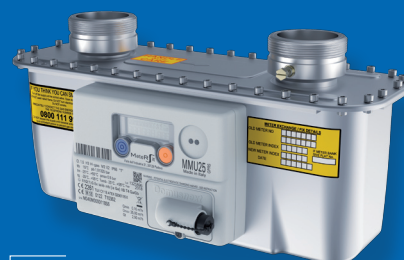
EN62056-21

DLMS/CoSEM

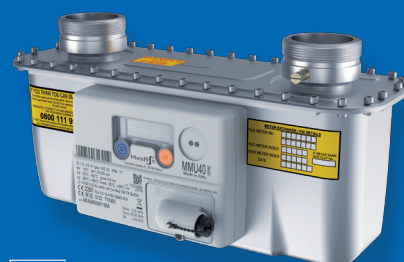
AES 128-bit encrypted communication



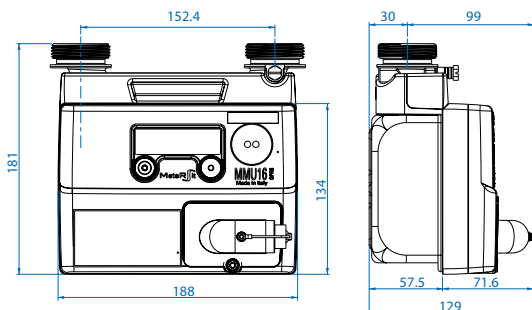
MMU16



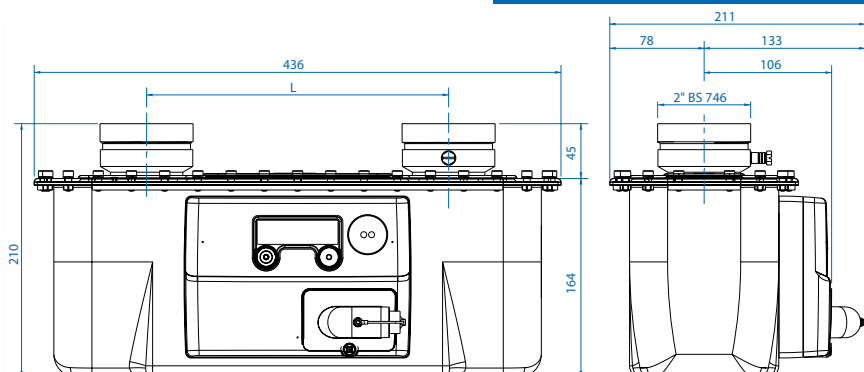
MMU25



MMU40



Model	ØD	L	Weight
MMU16	1 1/4 in BS 746	152,4 mm	2,2 kg



Model	ØD	L	Weight
MMU25	2 in BS 746	250 mm	6,4 kg
MMU40	2 in BS 746	280 mm	6,4 kg